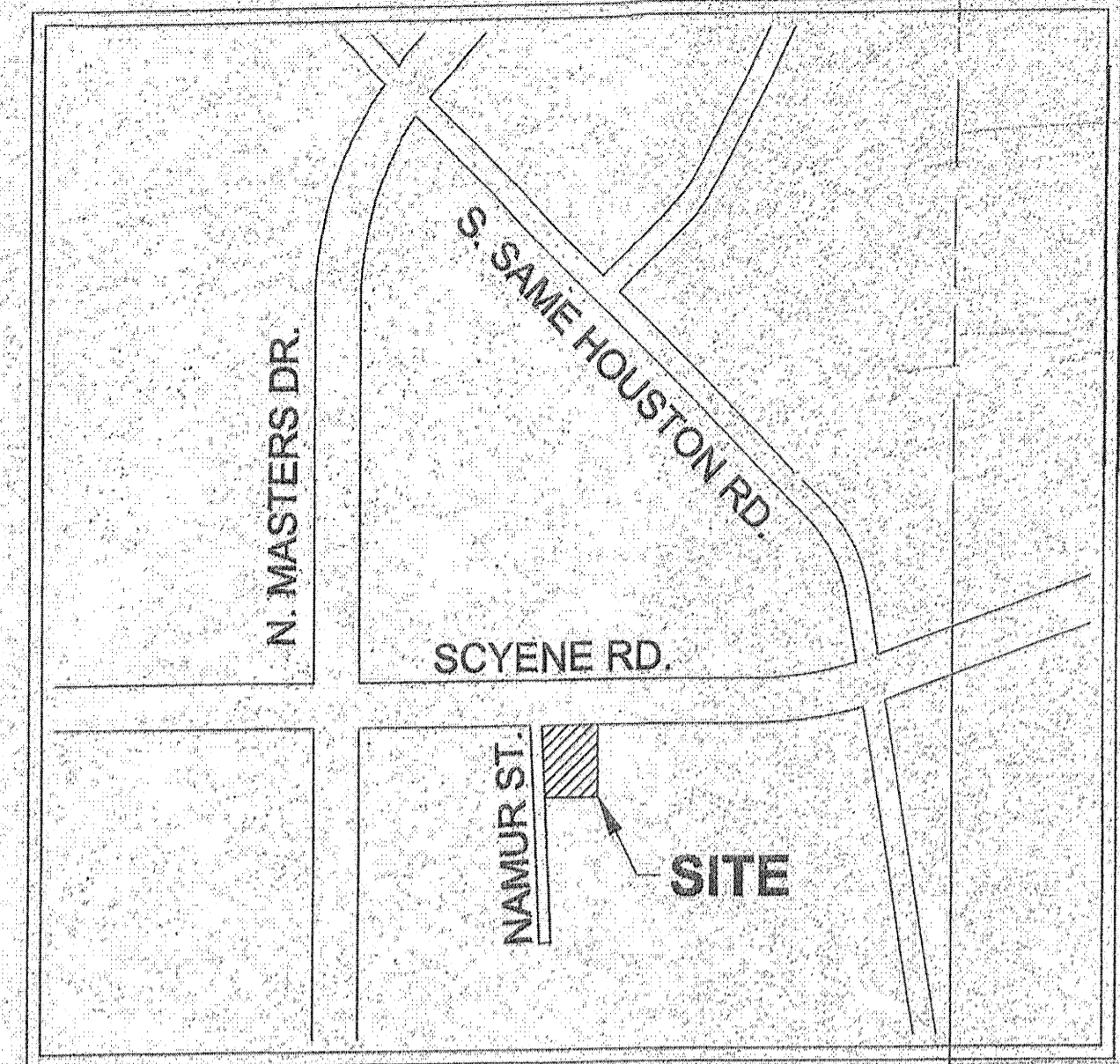
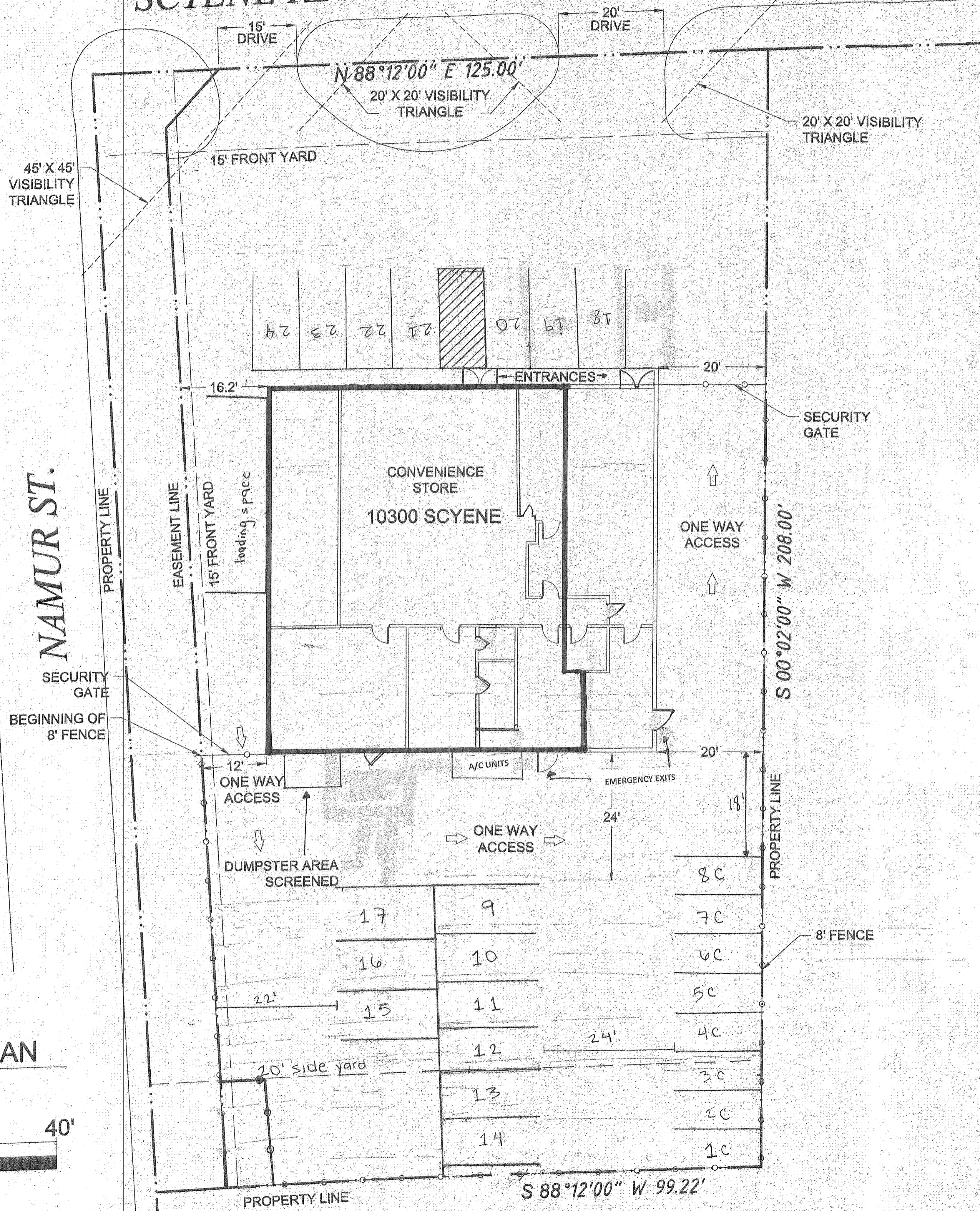
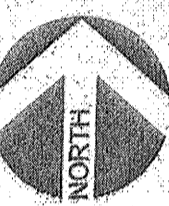


SCYENE RD.



VICINITY MAP



Site Summary

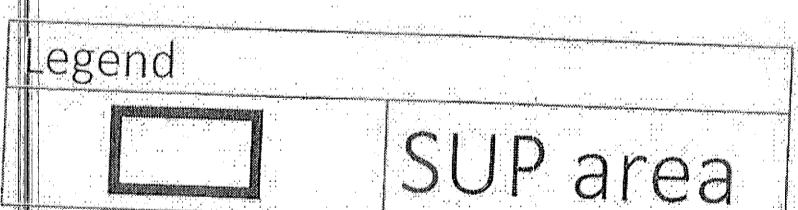
Zoning: CR D-1
 Zoning Request: SUP for the sale of alcoholic beverage for off-premise consumption in conjunction with general merchandise store 3,500 square feet or more.
 Existing Use for SUP area: General merchandise or food store 3,500 square feet or more.
 SUP Floor Area: 3,774 square feet.

Convenience Store: 3,774 sqft.
Pharmacy: 1,122 sqft.
Total: 4,896 sqft.

Existing Use for Pharmacy: General merchandise or food store less than 3,500 square feet.
 Parking Ratio: 1/200
 Required Parking: 24 spaces
 Provided Parking: 24 spaces
 Lot Area: 18,944.24 square feet

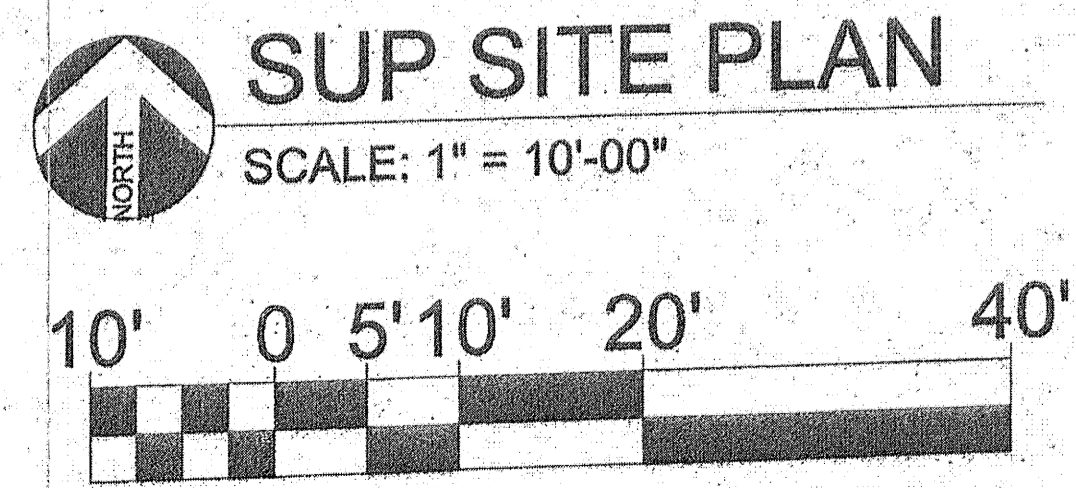
Specific Use Permit No. 2354

Approved City Plan Commission October 17, 2019



31408
 APPROVED BY CITY COUNCIL
 DEC 11 2019
 CITY SECRETARY

191946



SUP SITE PLAN

SCALE: 1" = 10'-00"

10300 SCYENE RD.
 CITY OF DALLAS, TEXAS

PROJECT NUMBER
 Z 189-336
 CASE NUMBER